

# BIOaudit™

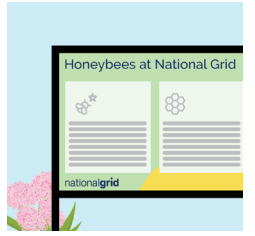
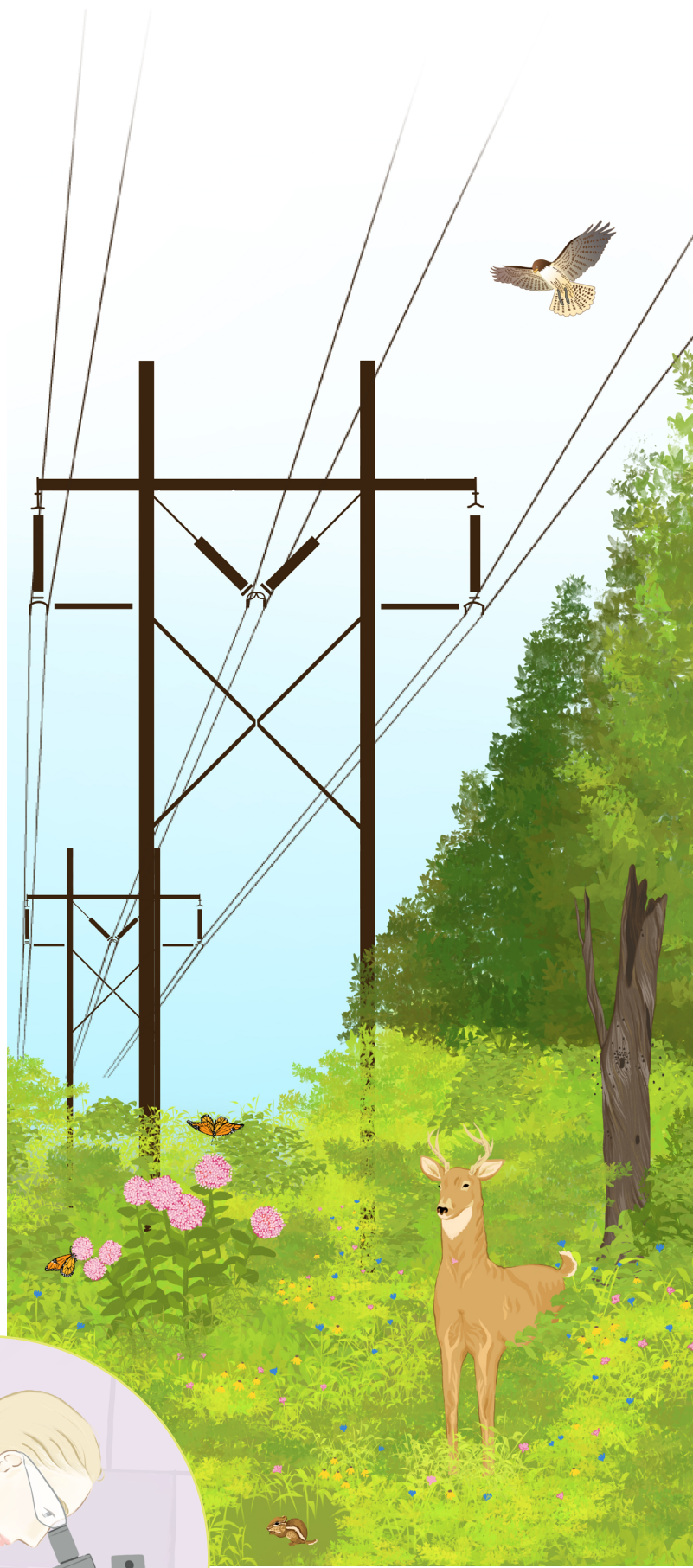
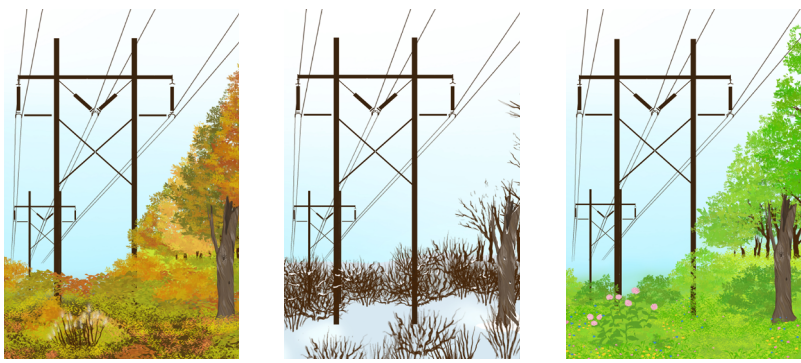
## The Biodiversity Study for Integrated Vegetation Management by ACRT Services

### What is BIOaudit™?

More than ever, utilities are being called upon to explain their efforts in environmental stewardship. Historically, this has been difficult to quantify, making it harder to justify Integrated Vegetation Management (IVM) efforts and communicate their importance. That's why ACRT Services developed the BIOaudit™ assessment. To promote corridor health and biodiversity over time, and to provide quantifiable data that vegetation management leaders can act upon and communicate with their communities, BIOaudit™ evaluates standardized plots in areas along the Right-of-Way (ROW). BIOaudit™ provides system-based ecological metrics for comprehensive, data-driven planning in managing ROW vegetation. ROW Science Advisors assess multiple aspects of biodiversity in corridors and green spaces—vertebrates, invertebrates, vegetation, and more.

### How BIOaudit™ Helps Vegetation Management Leaders

- Evaluates and confirms IVM practices and results
- Enables more proactive vegetation management
- Identifies invasive species impacting ROW ecosystems
- Ensures in-depth analysis via field collection software
- Provides easy access to data via client portals
- Informs the public via a tailored educational website
- Enhances pollinator health and native species in ROWs
- Supports environmental compliance efforts
- Helps share environmental efforts with the public
- Supports rare, threatened, and endangered species
- Improves biomechanical understanding of tree zones
- Aids understanding of biohabitats through cyclical seasonal testing



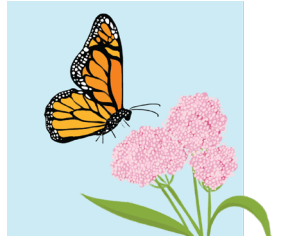
Identifies key biodiversity areas



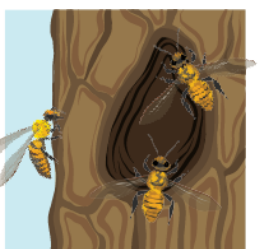
Measures ecological progression



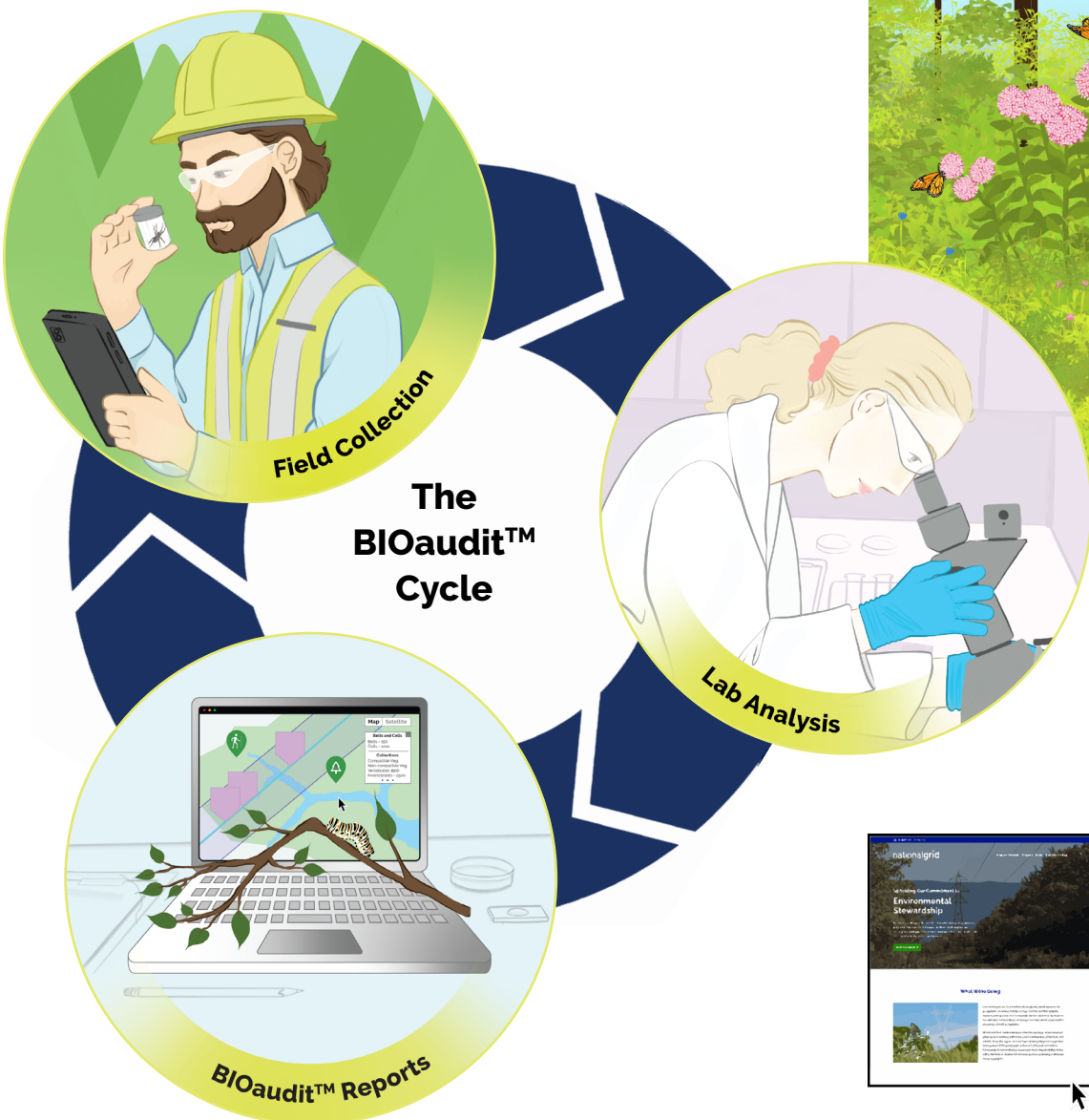
Educates and informs local land-owners



Supports threatened species



Bolsters honeybee populations and aids pollination in surrounding areas



### BIOaudit™ in Action

ACRT Services recently partnered with National Grid, a major electric and natural gas utility serving more than 20 million people throughout New England and New York. With an extensive commitment to environmental stewardship that reaches back more than 70 years, National Grid enlisted the RSI team at ACRT Services to perform a BIOaudit™ diversity study. Together they explored the impact of current integrated vegetation management (IVM) efforts and increased awareness of IVM in the greater community. Additionally, in the coming years, the data captured by these BIOaudit™ studies will continue to assess native seed banks, beneficial plant and insect communities, and much more. Long-term expectations are an increase in sustainable ground coverage, variety and timing of blooms, and pollinator food, shelter, and protection for insects and other wildlife while decreasing herbicide use and reducing carbon footprint from soil to sky. Connect with us today to learn more about our capabilities and how we'll help you make a positive, lasting impact in your region.

See Continual Results on [bioaudit.acrt.com/national-grid](http://bioaudit.acrt.com/national-grid)

